



AutoMate⁹

Product Overview

BENEFITS OF AUTOMATE 9

The technology found within AutoMate 9 overshadows other more expensive products by automating highly complex business and IT processes executed on the desktop without the need for writing code.

The AutoMate 9 solution includes drag-and-drop development, easy administration, and extensive error handling...all in one complete platform!

AutoMate 9 benefits:

- Reduces application development time by more than 50% through the use of its GUI-based Task Builder.
- Lowers costs and hassles associated with developing and maintaining code, scripts, and batch files.
- Eliminates time-consuming, labor-intensive, repetitive IT tasks.
- Enables employees to focus on strategic activities where human interaction and thought add the most value.
- Most of our clients report completes ROI within 3 months of implementation.

Join the more than 10,000 active customers worldwide who have already discovered the power, flexibility, and cost savings of AutoMate.

AutoMate 9 represents a significant leap forward in automation technology for the mid-market. It is a cogent investment that is sure to deliver business value and increase ROI to organizations across all vertical markets. As organizations seek out ways to reduce costs and improve efficiency, they consistently fall short due to the complexities of automating tasks using various scripts, batch files, macros, and other executables. Without a robust automation platform that provides an easy-to-use, end-to-end solution, the automation of IT and business processes becomes difficult to implement and costly to maintain.

AutoMate 9 raises the bar when it comes to functionality, ease of use, configurability, and cost as compared to other systems that are either very large, expensive, or both. It is the only product of its kind that offers the type of power typically found in large enterprise systems along with the simplicity found in applications with much less functionality. This marriage between power and simplicity creates the ideal automation platform for the mid-market.

Task Builder

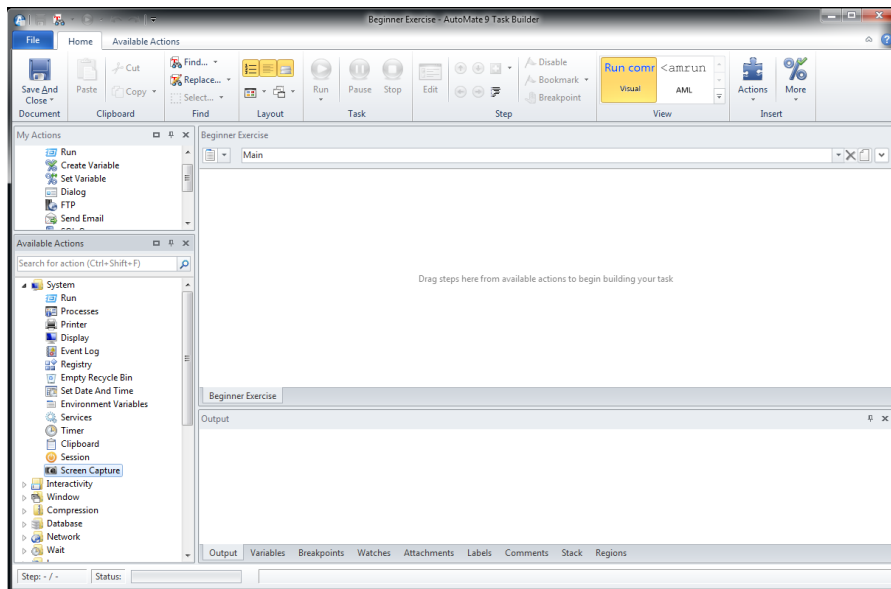
Relying solely on scripts and batch files for process automation is an inherently flawed methodology that leaves an organization vulnerable to many potential problems. Writing code is time intensive as it requires a development, debugging, and deployment phase. A script is intended to execute a simple task. However, basic scripts manifest into multiple script files, thousands of lines of codes, and the inevitable burden of maintaining the code. Also, writing code is costly to any organization. As additional projects are assigned to a developer, output decreases. As such, writing code is not a scalable solution.

The Task Builder within AutoMate 9 eliminates the need for writing scripts and batch files altogether. With our comprehensive library of prebuilt Actions ranging from sending simple keystrokes to performing Terminal Emulation, the Task Builder enables users to quickly and easily drag-and-drop actions together, creating powerful automated processes without writing code.



The Task Builder also provides the following important features:

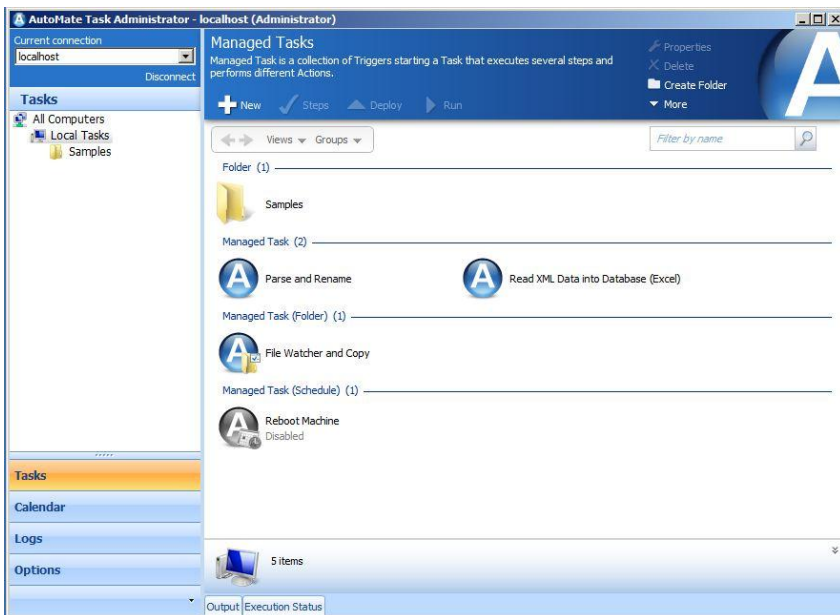
- **Plain English Display** – All steps within a Task are displayed in Plain English text to eliminate any mysteries about what operation is being performed.
- **Error Identification** – Errors are clearly displayed and show the step in which the error occurred for easy debugging of Tasks.
- **Error Handling** – The Task Builder has the ability to automatically take corrective action and/or send notifications of the error.
- **OCR/Screen Capture**—Actions provide the ability to “read” scanned images of typewritten or printed text, or screenshots.



Task Builder — The new, redesigned interface improves upon our “no code” approach.

Task Administrator

Management of automated processes at organizations without an effective automation platform is fragmented at best. Often Windows Task Scheduler or another job scheduler is used to start scripts and batch files on individual machines. Anyone with access to these tools can schedule a job to run on any available machine, exposing serious security concerns. The lack of centralized management for automated processes contributes to compliance violations, lower productivity, and creates greater inefficiency in the workplace.



Task Administrator — By utilizing a modern GUI approach in AutoMate 9, the redesigned Task Administrator offers greater efficiency in task management.

The newly, redesigned Task Administrator within AutoMate 9 solves these problems by providing centralized management and administration for all of the automated processes on the local machine and connected Runtimes. This allows for greater control of the processes being automated as well as greater insight into the success and failure of individual tasks.

Additionally, the Task Administrator allows for backup and restoration of AutoMate data, event log visibility, a task execution graphical calendar, and access to a wide variety of pre-packaged AutoMate tasks.

Editions Overview

AutoMate 9 offers two editions: Professional and Premium. The Premium Edition offers all the features found in the Professional Edition along with the following:

- **Microsoft Dynamics CRM *** — Automate a wide range of entity data management activities within the Microsoft Dynamics CRM software, including creation, deletion, updating, query, retrieval, storage, and reporting of all customer, product, and order data.



- **SNMP Support** – SNMP is the internet standard protocol developed to manage nodes (servers, workstations, routers, switches, and hubs etc.) on an IP network. AutoMate launches a task when an SNMP trap is received. You can specify filters to watch for particular traps. An SNMP trap is a message sent by a Runtime to a management system indicating that an event has occurred on the host running the Runtime.

- **Amazon Web Services (AWS)** – “To the Cloud!” Provides an on-demand cloud IT infrastructure to companies of all sizes. AutoMate supports the five main components of AWS: EC2, RDS, S3, SimpleDB, and SQS. This offers a simple way of controlling your infrastructure needs and costs from launching new instances to moving data to the cloud. AutoMate is able to control all your cloud automation needs.

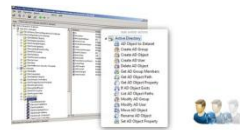
- **Microsoft Windows Azure Storage *** — Take advantage of fully enabled cloud storage automation via Microsoft's Azure Storage Services; Native activities to create, list, update, and delete Binary Large Objects (BLOB), Table Services, and Queue Services.



- **Native Terminal Emulation Support** – AutoMate 9 Premium Edition allows direct automation of your legacy systems over SSH, Telnet or COM port by supporting terminal emulation standards such as TTY, VT100, VT220, VT320, TN3280, TN5250, and ANSI natively.
- **Runtime Support** – This allows for tasks to be developed within the Premium Edition, and then deployed to Runtime licenses (sold separately) for remote execution. This offers an extremely cost effective means of automating multiple machines with the power of AutoMate.

- **MSMQ (Microsoft Message Queuing)** – MSMQ technology enables applications running at different times to communicate across heterogeneous networks and systems that may be temporarily offline. AutoMate Premium has the capability to automate MSMQ operations, including the ability to send, retrieve, clear, or wait for MSMQ messages as well as the capability to create or delete a message queue.

- **Active Directory Actions** – A set of 15 Active Directory actions are included in AutoMate Premium providing the capability to create, modify, and remove Active Directory objects, groups, or users.



- **Microsoft SharePoint *** – SharePoint is a powerful business collaboration platform. AutoMate's pre-built SharePoint activities and drag-and-drop interface automate the management and administration of SharePoint users, sites, libraries, and lists. AutoMate provides the capability to automate all SharePoint business and IT processes on a single platform.
- **VMware** – VMware provides a completely virtualized set of hardware to the guest operating system. AutoMate supports the full suite of virtualization software including ESX, ESXi, Workstation, and Player. This provides the ability to clone systems, manage snapshots, and interact directly with a Guest OS. By combining tools from both the physical and virtual world, AutoMate is able to connect disparate applications within a single workflow.
- **Microsoft Exchange Actions *** — Now including support for Microsoft Office 365! AutoMate creates, deletes, and modifies Microsoft Exchange objects like appointments, tasks, contacts, and email.



* Denotes new features available only in AutoMate 9.

These features are designed to offer greater flexibility and implementation options to the businesses that require them. While not every company will need the robustness of the Premium Edition, it will prove invaluable to those requiring support for legacy applications or anyone seeking to automate beyond just a single desktop.

Licensing Model

Network Automation products are licensed on a per machine basis. Each machine used for management, development, or execution of an automated business processes using AutoMate 9 will require a license. Below is a brief description of each licensed product part of the AutoMate 9 product line:

- **AutoMate 9 Professional** – The base version of AutoMate 9 is designed to automate most desktop processes.
- **AutoMate 9 Premium** – The Premium Edition has all of the functionality of the Professional Edition along with SNMP support, Terminal Emulation support, and Runtime support (see Editions Overview).
- **AutoMate 9 Runtime** – Each license enables the use of a Runtime for execution of tasks built in the Premium Edition on one machine. Tasks reside locally on the Runtime machine.

The purchase of AutoMate 9 Professional or Premium includes 1 license for task development and execution. Runtime licenses for the Premium Edition are sold separately. Volume discounts are available for all multi-machine license purchases.