



MindManager[®]

for SharePoint[®]

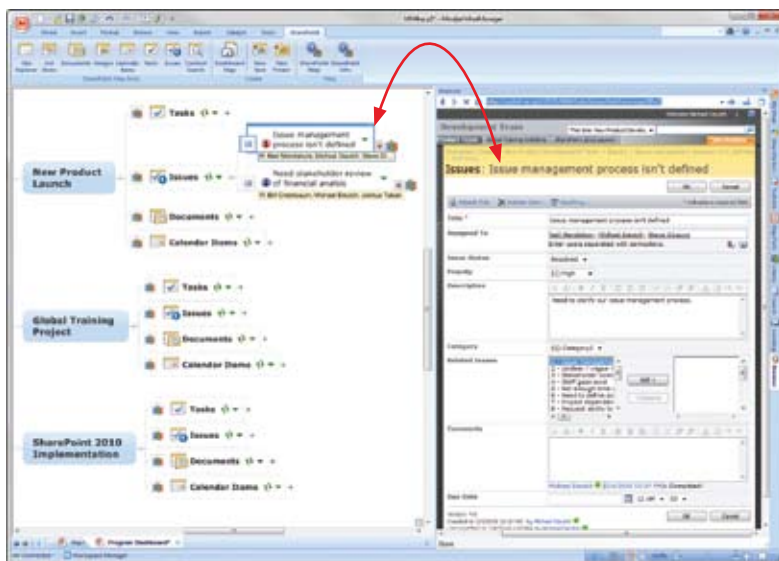
As companies of all sizes adopt and expand usage of Microsoft SharePoint, many users are challenged to keep up with the wealth of information and proliferation of projects. To take full advantage of SharePoint, users need an easier way to create personal, aggregate views that consolidate their tasks and relevant resources for easy follow-up and review.

Does your team experience the following:

Spend more time navigating than working?

Difficultly finding the right information within SharePoint?

Lack visibility into documents, project status and assigned tasks?



Access and update SharePoint content from within MindManager.

Now anyone can apply the power of MindManager, the leading desktop software for visually organizing and managing information and projects, to their SharePoint data and tasks. Users create personalized interactive views of SharePoint data that help save time, solve business problems, accelerate processes, and drive projects and innovation. By visually organizing and updating information with MindManager for SharePoint, everyone will see the big picture, while still tracking the smallest details.

Increase SharePoint Productivity

- Consolidate tasks & resources across all of your SharePoint sites and lists for easy follow-up & review
- Access, review and update information with fewer clicks in a single dynamic view
- Search across multiple SharePoint sites and lists

Accelerate Projects & Business Processes

- Conduct meetings and manage information in dynamic views to review and advance projects and processes
- Manage tasks and activities more efficiently
- Collaborate visually to innovate, solve problems, capture requirements and develop plans and strategies

KEY CAPABILITIES

Project and Process Dashboard Maps

Let your teams see the big picture and all the important details. Team members complete tasks faster by accessing all unfinished work within their own personalized interactive map dashboards.

MindManager for SharePoint provides bi-directional synchronized views to display and update tasks, issues, documents and more. Update status with just a click or access and modify entire SharePoint items within MindManager.

Document Management

MindManager for SharePoint displays SharePoint files from one or more sites letting teams access and update information with less effort.

Interactive Site Maps

Generate SharePoint site maps that span across multiple sites for fast and easy navigation. Users annotate, reorganize and filter maps to quickly focus on key information.

Mindjet GmbH
European Headquarters
Siemensstrasse 30
63755 Alzenau, Germany
www.mindjet.com

Mindjet (UK) Ltd.
1000 Great West Road
Brentford
TW8 9HH, United Kingdom
www.mindjet.co.uk

Key Capabilities Continued

Visual Search Results

Reduce time spent searching for content throughout SharePoint. MindManager displays results from multiple sites and lists in an interactive view. Find content fast and avoid unnecessary rework.

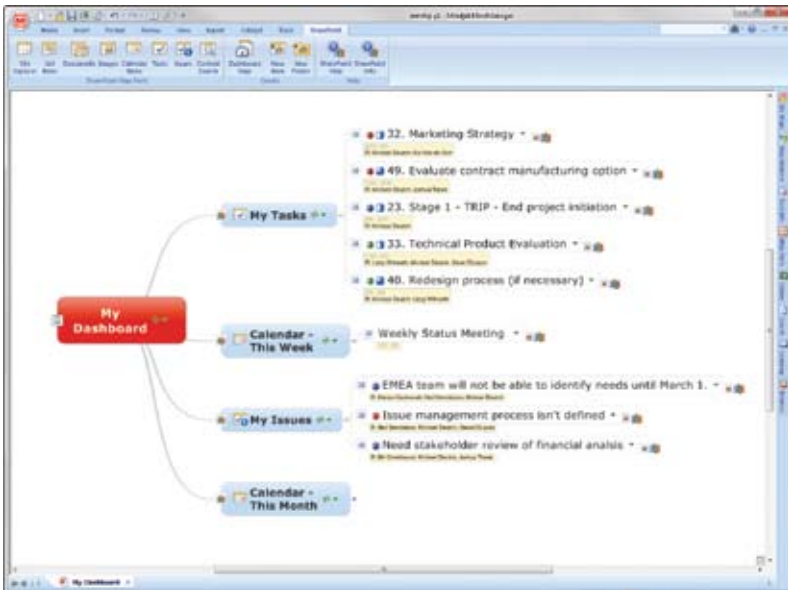
Visual MindMapping

Unleash the power of your team by using MindManager to visually capture, organize and connect ideas and information. Add images, hyperlinks, attachments, priority and more to help understand structure, relationships and priority.

Microsoft Office, Outlook and Project Integration

Import and export Microsoft Office documents, including Word, PowerPoint, Visio and Project. Link Excel files to topics. View and edit these files directly within MindManager.

Add new or import Microsoft Outlook information directly into MindManager, or add items into maps directly from Outlook.



SharePoint dashboard in MindManager.

Tags, Attachments, Hyperlinks & Notes

Use icon and textual tags to organize content, attach or link files or web pages to any topic. Add detailed topic notes to provide additional context to any topic.

Share Your Maps

Email links to maps or save them directly into SharePoint. Recipients can either view maps in their browser, or, with your permission, copy it for their own use. With the Mindjet Player™, share your maps with anyone using dynamic Adobe PDF or Adobe Flash formats.



MindManager® for SharePoint™

Additional Features

- Integrated web browser
- Map filters
- Map search
- Topic sorting
- Topic alerts
- Multi-map view
- Outline, review, presentation and brainstorm modes
- Export as PDF, image or web page(s)
- VBA scripting

Technology Requirements

Supported Operating Systems:

- Microsoft® Windows® 7 32-bit and 64-bit
- Microsoft Windows Vista® 32-bit
- Microsoft Windows XP SP3 32-bit
- Microsoft Windows Server® 2003 32-bit
- Microsoft Systems Management Server using Windows Server 2003 32-bit
- Citrix MetaFrame Presentation Server 4.5

System requirements:

- IBM or compatible Pentium® processor (700 MHz or greater)
- 512 MB RAM or greater
- 150 MB disk space and 50 MB more during installation
- SVGA (1024 x 768/16-bit color or greater)
- Microsoft .NET 2.0 or higher

SharePoint requirements:

- Windows SharePoint Services 3.0
- Microsoft Office SharePoint Server 2007 Standard
- Microsoft Office SharePoint Server 2007 Enterprise

Additional requirements to use certain features:

- Microsoft Office Professional 2002/XP, 2003 or 2007
- Microsoft Project® 2002, 2003 or 2007
- Microsoft Visio® Professional 2002, 2003 or 2007
- Microsoft Internet Explorer® 7.0 or greater
- Mozilla® Firefox® 3.0 or greater
- Adobe® Acrobat® 9.0 or greater
- Adobe Flash® Player 9 or greater
- Internet connection

