

# InterBase® XE

Embed. Deploy. Relax.

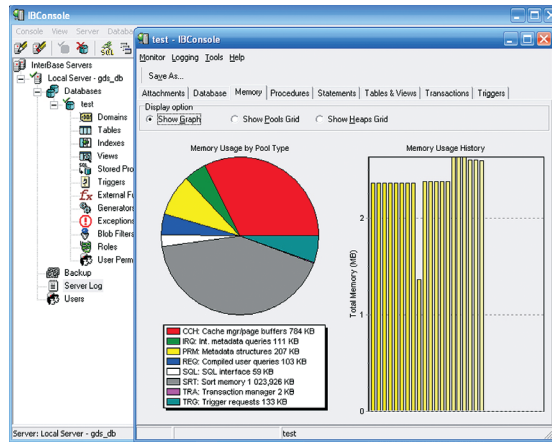
embarcadero®



InterBase XE is built for developers to create amazingly fast, resilient business-critical applications for embedding in devices and small enterprise, desktop, and workgroup solutions. InterBase has the features developers need and doesn't get in their way. InterBase is a full-featured SQL DBMS that

- Enables real-time queries against transactional data
- Allows rapid application development
- Provides extraordinary transaction processing speed
- Requires minimal hardware and near zero administration

InterBase XE is the perfect foundation for embedded solutions. InterBase also supports heterogeneous O/S connectivity for Windows®, Linux, Solaris™, and Mac OS® X.



IBConsole lets DBAs navigate and administer their InterBase data sources easily with a powerful, yet easy to use GUI.

## PERFORMS AND SCALES TO RUN THE MOST DEMANDING APPLICATIONS EASILY

InterBase XE is one of the fastest native databases available. Using its built-in symmetric multiprocessing (SMP), InterBase can take advantage of today's fastest multi-core CPUs and multi-CPU systems. Performance enhancements and optimizations have been added in a number of areas, such as batch updates, query optimizations, and OLTP improvement via journaling. InterBase XE uses a multi-generational architecture providing unique versioning capabilities that result in high data availability for transaction-processing users and decision-support users – simultaneously.

## SECURES AND PROTECTS SENSITIVE DATA AND ENABLES COMPLIANCE

Safeguarding private and personal information is critical to your business. InterBase XE is a small-footprint, high-performance DBMS with the encryption capabilities required to protect all your business-critical information. InterBase XE supports sophisticated encryption technology ensuring your data is protected – at rest and over the wire. InterBase XE supports the Advanced Encryption Standard (AES), a symmetric-key encryption standard adopted by the U.S. government and Data Encryption Standard (DES) encryption. InterBase can encrypt data stored in the database, transmitted across networks and stored in database backups to ensure privacy is maintained for the life of your data.

## PROVIDES CONSISTENT, FAST AND RELIABLE TRANSACTION PROCESSING BASED ON MULTI-VERSION ARCHITECTURE

InterBase XE is the ideal platform to manage the complexity of today's business requirements within the constraints of today's economic reality. InterBase XE provides enterprise-class features including transaction management and concurrency control, referential integrity, high-availability and a multi-version architecture to eliminate blocking. InterBase delivers fast, high-volume, high-throughput transaction processing, with continuous availability to satisfy the most demanding applications. And InterBase XE supports all major development paradigms including Java, C, C++, .NET, Delphi, PHP, and Ruby.

## INSTALLS IN MINUTES AND REQUIRES LITTLE OR NO ADMINISTRATION

InterBase XE combines simple installation and automatic crash recovery, with a self-tuning engine that makes it well-suited for embedding. InterBase is ideal for ISVs, OEMs, and VARs requiring a database that is compact in memory and disk size but without compromising sophisticated features to support high-powered, business-critical applications. And, unlike many other enterprise databases that require expensive ecosystems of support and maintenance, InterBase XE is virtually maintenance-free.

## Key Benefits

- High performance ultra-lightweight database
- Full featured, ACID compliant, ANSI SQL
- Rich choice of tools and languages
- Scales easily
- Proven reliability
- Lowest total cost of ownership

## Related Products

### Rapid SQL®

Write high-performance, quality SQL in an integrated cross-platform database development environment.

### DB Change Manager™

A complete set of schema, data and configuration tools to manage the database change management lifecycle.

### RAD Studio XE

The industry's most powerful rapid application development suite for building amazing Windows applications.

### Delphi® XE

The fastest way to build native Windows applications.

### C++Builder® XE

RAD visual development meets C++ power.

### JBuilder®

The fastest way to develop enterprise Java™ applications.

### 3rdRail™

The fastest way to build Ruby on Rails™ web applications.

### Embarcadero®

### All-Access™

Instant access to the languages, tools, and technologies to design, build, and run your software applications and database systems.

Feature	Description
<b>New!</b> Stronger password protection with SHA-1 cryptographic hash function	InterBase XE supports passwords up to 32 bytes long. Enables more robust authentication for InterBase databases and compliance with password requirements from the Payment Card Industry – Data Security Standard (PCI-DSS) and other security requirements.
<b>New!</b> Support for Dynamic SQL in Stored Procedures	Now you can leverage a very flexible and powerful tool from within Stored Procedures. With InterBase XE, you can use dynamic SQL to accomplish tasks such as adding where clauses to a search based on what fields are filled out on a form or to create tables with varying names from Stored Procedures with Execute Statement
<b>New!</b> Support for increase buffer caches for improved performance	Improved scalability and performance with the ability to configure up to 75M pages on 64-bit systems to improve performance on large data sets.
<b>New!</b> Optimized performance of large objects with Stream methods	Simpler, faster and standard compliant access to BLOB data types.
<b>New!</b> Improved scalability with the ability to handle 8 times more data.	Handle up to 8 times more data in InterBase XE with 40-bit record IDs
<b>New!</b> 64-bit native binary application	Ability to leverage the 64-bit capabilities and scalability of underlying systems. Fully compatible with 32-bit InterBase applications.
<b>New!</b> Table-Specific Blocking Factors	Increases storage capacity of large tables while reducing memory requirements for run-time retrieval
<b>New!</b> Larger index key segment size	Now larger column data can use this for both single-byte character sets and multi-byte (such as UTF8) columns.
<b>New!</b> Support for larger external files	InterBase XE now supports external files >4GB
Over-the-Wire (OTW) Encryption	Encrypts the data as well as any other communications (commands, etc.) between servers and clients <b>New</b>
Database and Column-Level Encryption	Encrypts a database and/or individual columns in a database <b>New</b>
To-Go Edition	Is a small, portable version of the Desktop Edition. Target applications for the To-Go Edition include small devices and public kiosks, as well as Value Added Reseller (VAR) and OEM applications that were built using InterBase. <b>New</b>
Built-in SMP Support	Gives you high performance on multiple CPU systems including multi-core CPUs
Journaling with Write Ahead Logging (WAL)	Improves VLDB management, OLTP performance, and facilitates disaster recovery. Only available with Server Edition.
Journal Archiving	Provides disaster recovery in the event a database becomes unavailable due to hardware or software failures that may make the primary database permanently inaccessible. Only available with Server Edition.
Point-in-Time-Recovery	Allows journal based recovery based on timestamp for greater recovery flexibility. Only available with Server Edition.
Incremental Backup	Backup databases between maintenance sessions
Batch Updates	Allow you to send a group of SQL statements, reducing the network traffic, resulting in improved performance, especially in LAN and WAN environments
Blob/Text SQL Syntax Enhancements	Supports use of BLOBs and VARCHAR data interchangeably, even in stored procedures
Extended International Character Support	Supports character sets via Unicode UCS-2 and UTF-8
Concurrent Running	Enables multiple instances of InterBase® to run on the same machine simultaneously for application isolation and load balancing
Global Temporary Tables	Allows you to implement the functionality of SQL global temporary tables to significantly ease application development
Embedded Database User Authentication	Enables isolated user authentication for unrelated applications
Support for the SQL99 SAVEPOINT portability	Supports Windows®, Linux, and Java™, with complete database portability
Performance Monitoring	Includes an enhanced, more intuitive IBConsole user interface. Only available with Server Edition.
Multigenerational Architecture	Enables unparalleled concurrency between readers and writers
Native Multi-Threaded Server	Provides background garbage collection and multi-user page buffer management
Active Database functions for extensible query support	Includes modular triggers and event alerts, user-defined functions for extensible query support
Stored Procedures	Encapsulates business logic on server for reduced network traffic

## System Requirements

### InterBase XE (10.0):

- 32 MB RAM
- 20/35 MB hard disk space for compact/full install
- CD-ROM drive

### Processor:

- Microsoft® Windows® and Linux: Intel® x86
- Sun Solaris™: SPARC
- Macintosh: Intel

### Windows:

- Microsoft® Windows Vista™ (requires administrator rights)
- Microsoft® Windows Server® 2008 R2 (64-bit)
- Microsoft® Windows® XP (SP3)
- Microsoft® Windows 7 (32-bit and 64-bit)

### Macintosh:

- Mac OS® X 10.5
- Mac OS® X 10.6

### Linux:

- Red Hat Enterprise Linux 5
- SuSE Linux 10 and 11

### Solaris™:

- Sun™ Solaris 10

### JDBC™:

- JDK™ 1.2, 1.3, 1.4, J2SE™ 5, Java™ SE 6, JDBC Type 4 Driver (this applies to Server Edition and Desktop Edition)